



FACADE CLADDING

System Solutions for Curtain Walls

SYSTEM OVERVIEW

Foreword

If the best material curtails creativity, what good is it? If the best idea cannot be realized, what good is it? Materials that foster creativity and lend form to ideas are required for individual solutions, as are consulting services that take technical perfection, structural physics and aesthetics into consideration.

RHEINZINK offers all of the above. Not only does the name stand for unique creative material to clad roofs and facades, but also for exemplary service to implement your ideas – regardless of the size of your project – big or small. We offer solutions that are as unique as your project. A comprehensive range of RHEINZINK roofing and facade products along with diverse installation techniques, make it easy to find a perfect solution for every design.

RHEINZINK is extremely malleable; it is compatible with every architectural environment and its aesthetic is timeless. Furthermore, requirements for sustainable building using natural material are met without difficulty. Its lifetime comprises several generations and that, in and of itself, sets standards; its ecological balance is exemplary.

The examples in this brochure illustrate the design potential of RHEINZINK, along with various options available to you by using this ecological material.

Datteln, January 2013



TRUMPF Sachsen GmbH, Neukirch, Germany



Terrace-shaped building,
Oswaldgasse, Vienna, Austria

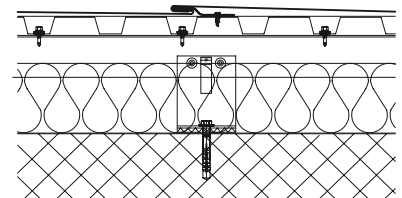


New Lecture Hall, Victoria University,
Werribee Campus, Werribee, Australia

RHEINZINK-Flat-Lock Tiles

Flat-lock tiles are used primarily for large curtain wall areas. This is where the visual effect is the most impressive. By using different sizes of tiles and by changing up the layout of the seam lines, the planner has many options for facade designs. For quality assurance and optimal material usage efficiency custom production is recommended.

- Individual tile sizes
- High degree of design freedom
- Environmentally friendly declared product





Olympic Stadium, Jinan, China



Head Offices of Berlinwasser Holding AG, Berlin, Germany

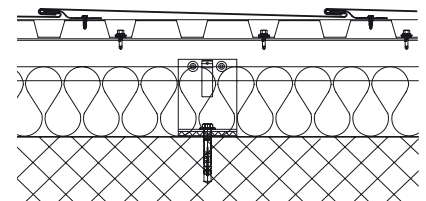
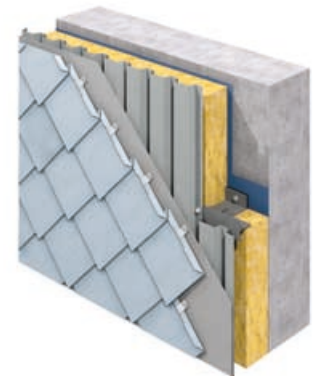


Sir Colin Campbell Building, University of Nottingham, Great Britain

RHEINZINK-Small Tiles

Square and diamond-shaped tiles make up RHEINZINK's small tile group. Contrary to sheets or shingles, these tiles have forward facing edges on the top surface and backward facing edges on the lower surface to form simple lock joints. The small format of these tiles permits secure and aesthetically pleasing solutions to be realized, particularly for geometrically complicated buildings. Virtually all corners and curves can be accommodated. Dormer, chimney head and roof edges are some of the more conventional applications for small tiles.

- **Diamond shaped or square tiles available in various sizes**
- **Flexible adaptation to building shapes**
- **Durable and environmentally friendly declared product**





Zinkhaus, Copenhagen, Denmark



Perth Convention & Exhibition Centre, Perth, Australia

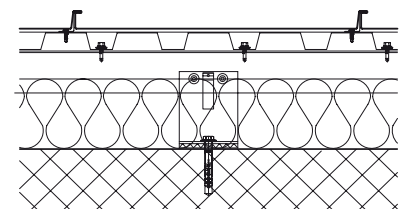


Villa, Prague, Czech Republic

RHEINZINK-Seam Technology

RHEINZINK-seam systems join individual panels longitudinally. The angled standing seam is used primarily for curtain walls. Its distinguishing feature is the bold accentuation of its seams (ca. 12 mm width). A variety of panel lengths and widths, allows even the most elaborate shapes to be realized using seam technology. The availability of machines guarantees efficient and consistent forming of panel edges and closing of seams.

- Suitable for almost every building shape or style
- In conventional vertical, diagonal or horizontal application
- A variety of panel widths available
- Environmentally friendly declared product





Train Station Passageway, Uster, Switzerland



Private Residence, Empel, Netherlands

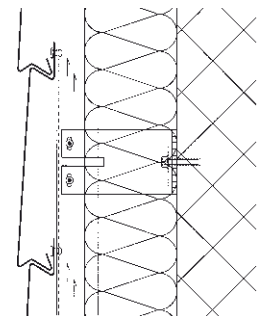


*MG AVU Galerie der modernen Kunst
Akademie bildender Kunst, Prague,
Czech Republic*

RHEINZINK-Shiplap Panel

Due to its layered characteristics and shadowless joint, the shiplap panel is a particularly unique facade cladding, reminiscent of wooden facades. When exposed to light and shade, interesting shadows and sharp contours appear because of its profile geometry. Precision profile manufacturing (in accordance with detailed planning and pre-defined panel dimensions) guarantees efficient and optimum installation on site.

- Layered sheath look
- A variety of panel widths available
- Environmentally friendly declared product





University of Nottingham, Business School, Nottingham, Great Britain



Theater am Marientor (previously: Les Misérables), Duisburg, Germany

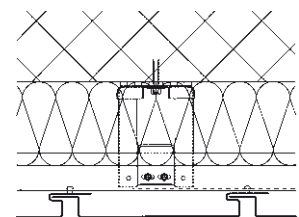


Tropical Islands, Briesen-Brand, Germany

RHEINZINK-Reveal Panels

The benefit of the reveal panel is the choice of bay widths (200-333 mm) and variable joint widths of 0-30 mm. With the flexibility of vertical and diagonal installation, the reveal panel offers the architect an exceptional amount of freedom in implementing their design ideas. Configured panels with an extremely wide range of shapes can be realized. Therefore, permanent quality solutions can be implemented very quickly when it comes to renovations or retrofitting insulation.

- A panel system with different visual effects
- Choice of reveal and panel widths
- Environmentally friendly declared product





Private Residence, Berlin, Germany



Multisport Complex, Walferdange, Luxembourg

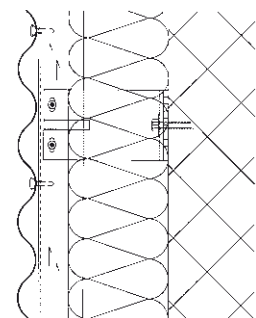


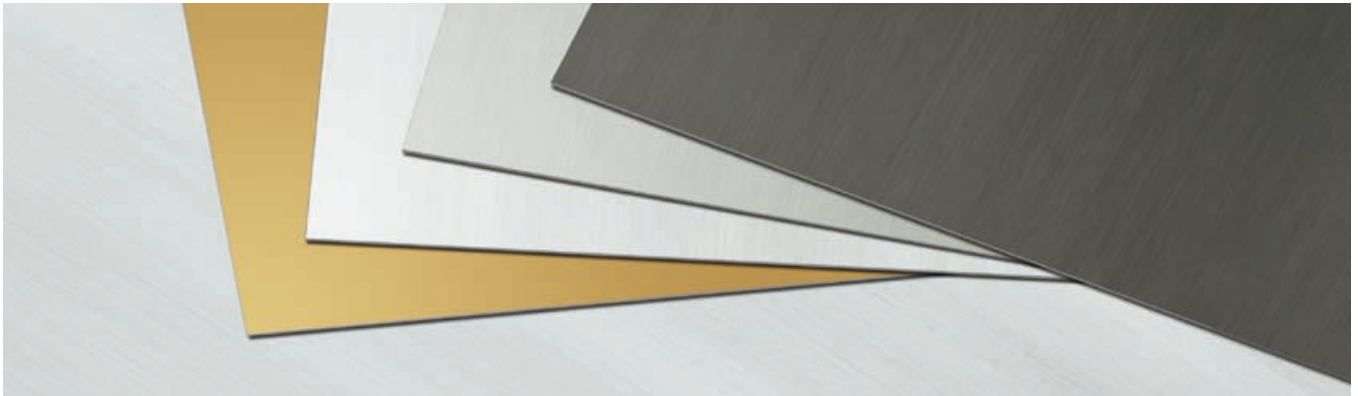
Private Residence, Datteln, Germany

RHEINZINK-Corrugated Profiles

The fluid design of the conventional sine wave gives the corrugated profile a filigreed look. Various types of installation – horizontal, vertical or diagonal – permit detailed panelization or clearly visible segmentation of the facade image, panel by panel. The soft interplay of light and shadow creates a vitality on these large surfaces that is both aesthetically interesting and appealing.

- **Flexible application as a result of large formats**
- **Accentuated facade design**
- **Diverse corrugated formats upon request**
- **Environmentally friendly declared product**





The Material with a Future.

In the context of the discussion on sustainability, the environmental compatibility of building products is being given greater significance, and accordingly influences the decision making, in the selection of materials, by the owners of buildings and planners. Focus is also given to the important consideration of the expenditure of energy consumption, during the manufacturing of the material, and additional energy saving is achieved by the high recycling rate.

RHEINZINK's environmental compatibility has high value. Ecological yardsticks have been set for the extraction and processing of the raw material. The consumption of energy is extremely low and our modern production facilities reduce emissions to a minimum. RHEINZINK is 100% recyclable and its use over many decades is the yardstick of its strength. Its use as a roof covering, facade cladding and roof drainage, is given high value,

since the consumption of energy in the recycling, amounts to only 5% of the primary energy content. The decision to use RHEINZINK is also a great benefit to future generations. Thanks to the recycling rate of 95%, a further reduction of the energy requirement is achieved in the manufacturing process, as production scrap is passed back to the melting process, without further pre-handling.

In addition to exemplary ecological characteristics RHEINZINK's aesthetic appearance is architecturally convincing. It can be delivered in various product lines and versions.



RHEINZINK-PATINA is the classic line. The bright rolled version (prePATINA bright rolled), in the course of time due to atmospheric influences, takes the form of

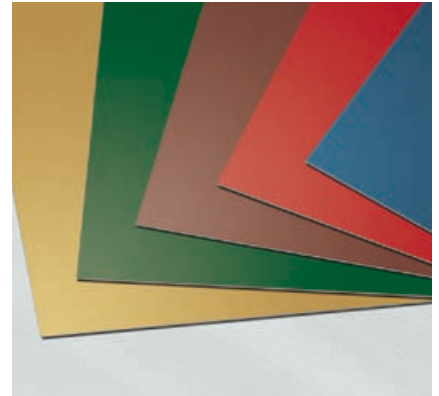
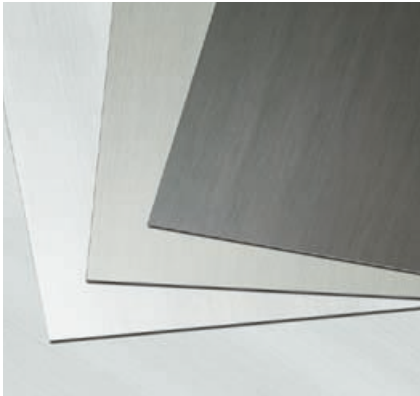
a natural patina. With the pre-weathered variants, the natural material of prePATINA blue-grey and prePATINA graphite-grey, have from the beginning a typical zinc, blue-grey and graphite-grey appearance. This product line with its pre-weathered variants will age over time. The blue-grey and graphite-grey appearance of the RHEINZINK-PROTECT LINE is however protected from aging, in the longer term, by a transparent protection coating

RHEINZINK – COLOR LINE, with its coloured RHEINZINK variants, offers additional design possibilities for roofing, facade cladding and architectural detailing. Currently it is available for delivery in the colours RHEINZINK-blue, RHEINZINK-tile-red, RHEINZINK-moss-green, RHEINZINK-pearl-gold and RHEINZINK-nut-brown. RHEINZINK – COLOR LINE retains the metal's outstanding processing characteristics.



- 1 TÜV QUALITY ZINC Certificate
- 2 TÜV Certificate
ISO 9001:2008,
ISO 14001:2004 and
ISO 50001:2011
- 3 IGEF Certificate
- 4 IBU Certificate
ISO 14025, ISO 21930, EN 15804

Please see www.rheinzink.com for many other exemplary solutions for working creatively with RHEINZINK. We would also be pleased to send you detailed information on the diverse RHEINZINK-Program!



Diversity instead of Monotony – The RHEINZINK-Product Lines



PATINA LINE
Living Material

Surface Finishes:

prePATINA bright rolled
prePATINA blue-grey
prePATINA graphite-grey

Convincing arguments:

- Natural material
- Natural patina formation
- Tried and tested processing characteristics
- For roof, facade, roof drainage and architectural details
- Excellent tensile and ductile characteristics
- Long life and low, to no maintenance
- 100% recyclable



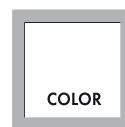
PROTECT LINE
Pure and durable

Surface Finishes:

PROTECT blue-grey
PROTECT graphite-grey

Convincing arguments:

- Natural material
- Optical durable protection thanks to the transparent coating
- Tried and tested processing characteristics
- For roof, facade and architectural details
- Excellent tensile and ductile characteristics
- Long life and low, to no maintenance
- 100% recyclable



COLOR LINE
Unlimited Versions

Surface Finishes (standard colours):

RHEINZINK-blue
RHEINZINK-tile-red
RHEINZINK-moss-green
RHEINZINK-pearl-gold
RHEINZINK-nut-brown

Convincing arguments:

- Natural material
- RHEINZINK-material quality with coloured coating
- Unlimited design variations
- Tried and tested processing characteristics
- For roof, facade and architectural details
- Excellent tensile and ductile characteristics
- Long life
- 100% recyclable



RHEINZINK GmbH & Co. KG
Postfach 1452
45705 Datteln
Germany

Tel.: +49 2363 605-0
Fax: +49 2363 605-209

info@rheinzink.de
www.rheinzink.com