



FACADE CLADDING

System Solutions for Facades

Foreword

If the best material curtails creativity, what good is it? If the best idea cannot be realized, what good is it? Materials that foster creativity and lend form to ideas are required for individual solutions, as are consulting services that take technical perfection, structural physics and aesthetics into consideration.

RHEINZINK offers all of the above. Not only does the name stand for unique creative material to clad roofs and facades, but also for exemplary service to implement your ideas – regardless of the size of your project – big or small. We offer solutions that are as unique as your project. A comprehensive range of RHEINZINK facade and roofing products, along with diverse installation techniques, make it easy to find a perfect solution for every design.

RHEINZINK is extremely malleable; it is compatible with every architectural environment and its aesthetic is timeless. Furthermore, requirements for sustainable building using natural material are met without difficulty. RHEINZINK is absolutely maintenance and service free. Its lifetime comprises several generations and that, in and of itself, sets standards; its ecological balance is exemplary.

The examples in this brochure illustrate the design potential of RHEINZINK, along with various options available to you by using this ecological material.

Datteln, May 2020





Central Building of the Leuphana University, Luneburg, Germany



TRUMPF Sachsen GmbH, Neukirch, Germany



Rosevia Resort, Jastrzębia Góra, Poland

RHEINZINK-Flat-Lock Tile System

Flat-lock tiles are used primarily for large facade areas. This is where the visual effect is the most impressive. By using different sizes of tiles and by changing up the layout of the seam lines, the planner has many options for facade designs. RHEINZINK-Flat-Lock Tiles are available in RHEINZINK-prePATINA blue-grey and graphite-grey preweathered versions, as well as in the RHEINZINK-CLASSIC bright rolled version. The bright rolled version opens up additional design potential; natural weathering of this material enhances the nuance of colour of each individual tile, creating a very special effect. For quality assurance and optimal material usage efficiency custom production is recommended. We produce flat-lock tiles on demand in the other surface qualities.

- Individual tile sizes
- High degree of design freedom
- Standard surface qualities
RHEINZINK-CLASSIC bright rolled,
RHEINZINK-prePATINA blue-grey
and graphite-grey
- Environmentally friendly product

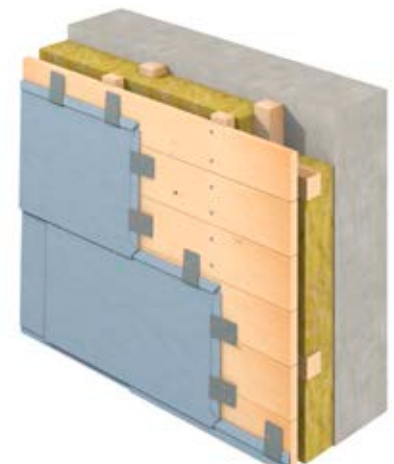


Fig. Cover Page: Primary School, Vienna, Austria

Fig. left: Charlottenhavn The Tower, Copenhagen, Denmark



Olympic Stadium, Jinan, China



Karl-Heinz Klein Sports Hall,
Heiligenhaus, Germany



Split-Level, Stuttgart, Germany

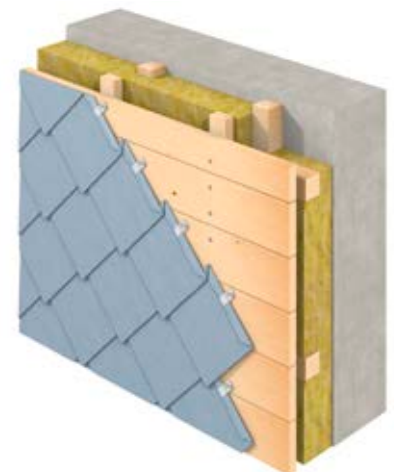
RHEINZINK-Small Tile System

The RHEINZINK small tile range includes the MULTI-FORM tiles, square and diamond tiles. Contrary to sheets or shingles, these tiles have forward facing edges on the top surface and backward facing edges on the lower surface to form simple lock joints. The small format of these tiles permits secure and aesthetically pleasing solutions to be realized, particularly for geometrically complicated buildings. Virtually all corners and curves can be accommodated. Dormer, chimney head and roof edges are some of the more conventional applications for small tiles.

From a roof pitch of 35 °, the small tiles can also be used as roofing.

We also produce small tiles on demand in other surface qualities.

- Available in various sizes
- Flexible adaptation to building shapes
- Standard surface qualities
RHEINZINK-CLASSIC bright rolled,
RHEINZINK-prePATINA blue-grey
and graphite-grey
- Durable and environmentally friendly





Residential and office building, Grevenmacher, Luxemburg



Williamson College of Business, Youngstown, USA

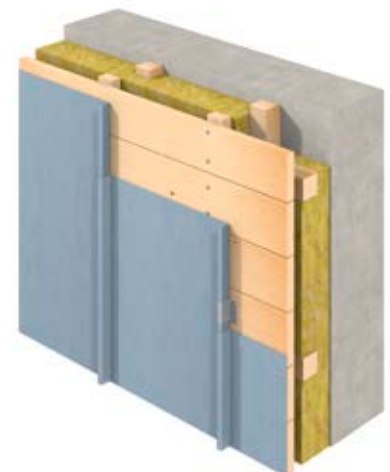


Residence Northcliff, Johannesburg, South Africa

RHEINZINK-Standing Seam System

RHEINZINK seam systems connect the individual panels lengthwise. The angled standing seam is primarily used for façades, and can also be used as a roof covering from a roof pitch of 25° (lower roof pitches can be achieved using the double lock standing seam technique). It stands out due to the filigree enhancement of its seams (width approx. 12 mm). As a reinterpretation of this traditional laying technique, different panel widths and laying directions are increasingly used. Thanks to different panel lengths and widths, even complex special shapes can be realized with the seam technique. We also produce standing seam systems on demand in other surface qualities.

- Suitable for almost every building shape or style
- A variety of panel widths is available
- Standard surface qualities
RHEINZINK-CLASSIC bright rolled,
RHEINZINK-prePATINA blue-grey
and graphite-grey
- Durable and environmentally friendly





Caprivi-Lounge, Osnabrück, Germany



Private Residence, Schänis, Switzerland



Housing estate, Cologne, Germany

RHEINZINK-Horizontal Panel System

Horizontal panels are defined by a fixed 20 mm wide joint and indirect fastening with special RHEINZINK clips. These provide for unobstructed, temperature-related length changes, enabling panel lengths of up to 6 metres. Different panel widths can be used to create a dynamic façade design.

We also produce horizontal panels on demand in other surface qualities.

- Horizontal facade segmentation
- Panels are available in various widths
- Standard surface qualities
RHEINZINK-prePATINA
blue-grey and graphite-grey
- Panel lengths of up to 6,0 m are available





Private Residence, Schmerlitz, Germany



Office Building, Hamburg, Germany



Gable cladding at residential building

RHEINZINK-SP-Line

New and innovative, the SP-Line is a complete system. It consists of a basic panel and prefabricated adjustable flashings; it can be installed both horizontally and vertically. One panel is plugged into the other. "Random designs", uniform seam patterns and "installation using slave profiles" can be realized without difficulty and without waste. Details are solved efficiently and economically. The modern look of the RHEINZINK-SP-Line is impressive; it is a very reasonable, yet high quality alternative to wood, stone and synthetic materials.

- Simple planning and installation
- Complete modular system
- Uniform seam grid
- Made of RHEINZINK-prePATINA blue-grey





IHT, Bonn, Germany



Apotex Centre, Winnipeg, Canada



*MG AVU Gallery of Modern Art,
Academy of Fine Arts, Prague,
Czech Republic*

RHEINZINK-Shiplap Panel System

Due to its layered characteristics and shadowless joint, the shiplap panel is a particularly unique facade cladding, reminiscent of wooden facades. When exposed to light and shade, interesting shadows and sharp contours appear because of its profile geometry. Precision profile manufacturing (in accordance with detailed planning and pre-defined panel dimensions) guarantees efficient and optimum installation on site. We produce shiplap panels on demand in other surface qualities.

- Layered sheath look
- A variety of panel widths are available.
- Standard surface qualities
RHEINZINK-prePATINA
blue-grey and graphite-grey
- Durable and environmentally friendly





Columbarium, De Nieuwe Ooster Begraafplaats, Amsterdam, Netherlands



Telecom Giubiasco, Giubiasco, Switzerland



Hostel, London, United Kingdom

RHEINZINK-Reveal Panel System

The benefit of the reveal panel is the choice of cover widths (200-333 mm) and variable joint widths of 0-30 mm. With the flexibility of vertical and diagonal installation, the reveal panel offers the architect an exceptional amount of freedom in implementing their design ideas. Configured panels with an extremely wide range of shapes can be realized. Therefore, permanent quality solutions can be implemented very quickly when it comes to renovations or retrofitting insulation.

We produce reveal panels on demand in the other surface qualities.

- **A panel system, with different visual effects**
- **Choice of cover and joint widths**
- **Standard surface qualities**
RHEINZINK-prePATINA
blue-grey and graphite-grey
- **Durable and environmentally friendly**





Jansen Campus, Oberriet, Switzerland



Ergo Arena Sopot, Gdańsk, Poland



SHV SullnerHaus Vorarlberg, Sulz, Austria

Surface Design with RHEINZINK

RHEINZINK facade systems have been tried and tested on the international architecture scene. The structured design is pleasing to the eye in a special way. Folds, curves, imprints and cut-outs create a sense of three dimensionality and unveil an extraordinary plastic effect which draws attention to the architecture. Even more fascinating is when natural or artificial lighting comes in to play. This creates special effects that stage or even dramatize parts or all of the building. Facades communicate, ideas become visible, and buildings come alive. With the structured RHEINZINK facade systems, even dominant buildings can attain a unique image.

You have the Idea – we have the Solution

The designs shown here provide an example of the numerous personalised options that are available in line with the surface designs from RHEINZINK-CLASSIC and RHEINZINK-prePATINA.

If you have a visionary idea or are looking for a practical solution, give us a call. Please also contact us for project related sampling. We will pursue your idea.

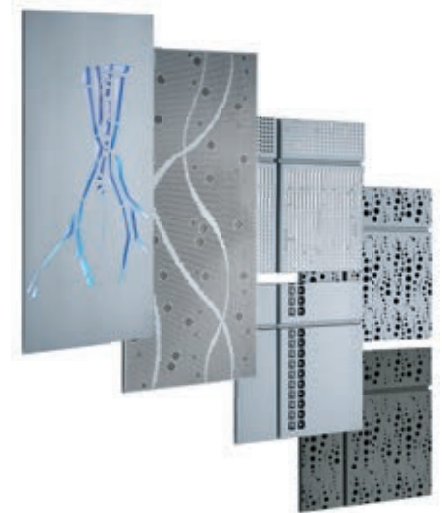


Fig. right: Substation and grid base Oerlikon, Zurich, Switzerland





**ONE BRAND –
5 PRODUCT LINES**

**THE PERFECT
SOLUTION
FOR EVERY
REQUIREMENT**

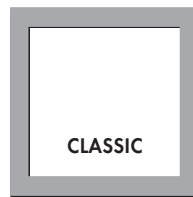
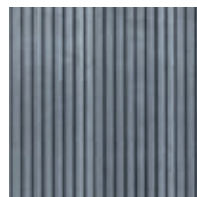
● bright rolled

● blue-grey

● graphite-grey

RHEINZINK-CLASSIC

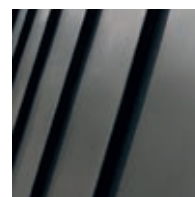
*ORIGINAL.
EXPRESSIVE.
PATINATES OVER TIME.*



TITANIUM ZINC BRIGHT ROLLED:
PATINATES OVER THE YEARS. NATU-
RAL, VARIABLE SURFACE CHARACTER.

RHEINZINK-prePATINA

*PRE-WEATHERED.
SELF-HEALING.
NATURAL.*

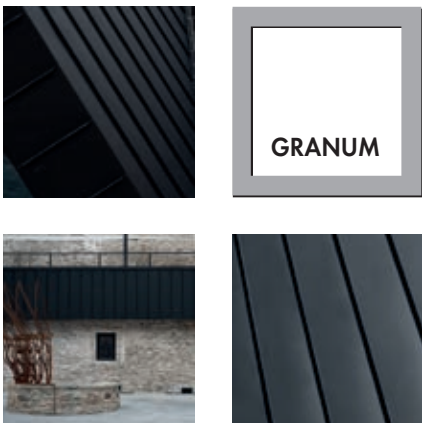


THE ONLY NATURALLY PRE-WEATH-
ERED SURFACE IN THE WORLD.
ZINC TYPICAL PATINA EX WORKS.
100% NATURAL, 100% RECYCLABLE.

- skygrey
- basalte

RHEINZINK-GRANUM

NOBLE.
MATTE FINISH.
MULTIFACETED.

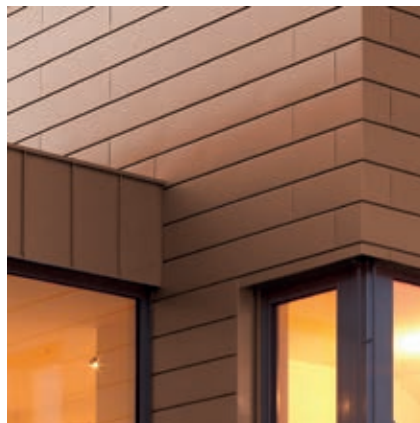


SKYGREY AND BASALTE. PURE, GREY ELEGANCE. URBAN DESIGN. PHOSPHATED SURFACE WITH COUNTLESS DESIGN OPPORTUNITIES.

- gold
- brown
- blue
- red
- green
- black

RHEINZINK-PRISMO

GLAZED.
DYNAMIC.
ADAPTABLE.



AESTHETIC, HARMONIOUS MATCH WITH ITS SURROUNDINGS. SUBTLE COLOUR VARIETY FOR A UNIQUE LOOK. SEMI-TRANSPARENT.

- pure-white
- pearl-gold
- moss-green
- nut-brown
- blue
- tile-red
- black-grey

RHEINZINK-artCOLOR

COLOURFUL.
LIVELY.
CREATIVE.



CREATIVE DESIGN POSSIBILITIES. INDIVIDUAL, EXPRESSIVE COLOUR COMPOSITIONS. COATED COLOUR VARIETY.



RHEINZINK GmbH & Co. KG
Postfach 1452
45705 Datteln
Germany

Tel.: +49 2363 605-0
Fax: +49 2363 605-209

info@rheinzink.de
www.rheinzink.de