



ROOFING

System Solutions for Roofs

Foreword

If the best material curtails creativity, what good is it? If the best idea cannot be realized, what good is it? Materials that foster creativity and lend form to ideas are required for individual solutions, as are consulting services that take technical perfection, structural physics and aesthetics into consideration.

RHEINZINK offers all of the above. Not only does the name stand for unique creative material to clad roofs and facades, but also for exemplary service to implement your ideas – regardless of the size of your project – big or small. We offer solutions that are as unique as your project. A comprehensive range of RHEINZINK roofing, facade, and our solar system product, along with diverse installation techniques, make it easy to find a perfect solution for every design.

RHEINZINK is extremely malleable; it is compatible with every architectural environment and its aesthetic is timeless. Furthermore, requirements for sustainable building using natural material are met without difficulty. RHEINZINK is absolutely maintenance and service free. Its lifetime comprises several generations and that, in and of itself, sets standards; its ecological balance is exemplary.

The examples in this brochure illustrate the design potential of RHEINZINK, along with various options available to you by using this ecological material.

Datteln, May 2020





Nanjing Niu Shou Mountain, Nanjing City, China



„Il sogno di Ivana“, Turin, Italien



Schwielowsee Resort, Werder, Germany

RHEINZINK-Double Standing Seam

The double standing seam is a further development of the original hollow folded joint or single standing seam. This reliable system has been referenced in technical literature since 1899 and is the top choice for roof pitches from 3° to 25°. Here, the name “double standing seam” characterises one of the conventional types of longitudinal joints above the water level. A fine-lined seam height of 25 mm is rainproof without any additional measures. The double standing seam, manufactured with pre-profiled panels, has gained international recognition. Seams are folded and closed manually or with a seaming machine. Custom shapes such as convex and concave curves and conical panels are produced without difficulty. Thanks to a multitude of detail variations, the double standing seam emphasizes both traditional and modern architectural design.

- Easy to install and suitable for all roof types
- Use on low pitched roofing
- Sheet lengths up to 16 m
- Durable, maintenance-free and environmentally friendly roofing material

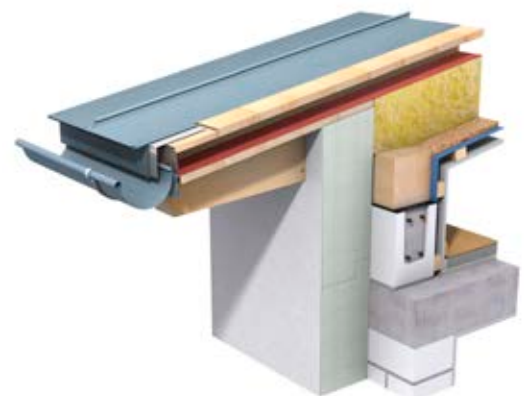


Fig. Cover page: Kindergarten, Althausen, Germany
 Fig. Left: Schwielowsee Resort, Werder, Germany



Private Residence, Gaonderange, Luxembourg



Private Residence, North Ayrshire, United Kingdom

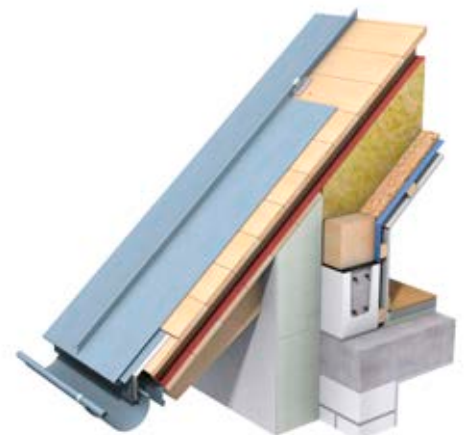


Private Residence Möllmann, Bielefeld, Germany

RHEINZINK-Angled Standing Seam

Within conventional sheet metal techniques, the angled standing seam is a relatively new development; it has only been referenced in technical literature since the beginning of the 20th Century. Closing the seam of a pre-profiled panel is very easy compared with the double standing seam. The angled standing seam is completed simply by folding in one leg. It is particularly suitable for visible design areas on metal roofs where the pitch is greater than 25°. As the angled standing seam looks wider than the double standing seam, it lends a vibrant, distinctive structure to large surface projects.

- **Easy to install and suitable for all roof types**
- **Distinctive design through wider seam**
- **Can be used for steep-sloped roofing**
- **Panel lengths up to 16 m**
- **Durable and environmentally friendly roofing material**





Hôtel du Louvre, Paris, France



Private Residence, Dresden, Germany



Private Residence, The Netherlands

RHEINZINK-Click Roll Cap

The roll cap system with battens is one of the more traditional of today's prevailing sheet metal work techniques. The name "Click Roll Cap System" stands for a type of longitudinal joint, whereby the RHEINZINK-Click Roll Cap Fastener, made of galvanized steel, is used as a fastener between the panels. Both fastening alternatives are covered with a roll cap. Efficient system installation is telling. Pre-fabricated termination profiles support the design quality and sophisticated look. The dominant longitudinal joints typical of the click roll cap system create a strong structural effect; the interplay of light and shadow is striking and charming. This lends itself to interesting design possibilities for both roofs and large curtain walls. An even greater wealth of variations exists when the roll cap system is combined with double standing seam techniques.

- Stronger line definition with roll cap joints
- Use on flat and steep-sloped roofs
- Cost effective assembly through high level of prefabrication
- Panel lengths up to 20 m
- Durable and environmentally friendly roofing material





Office Building, Wedemark, Germany



Private Residence, Rangsdorf, Germany



Split-Level, Stuttgart, Germany

RHEINZINK-Tiles

Tiles are becoming more and more popular for roofing as well. Small RHEINZINK-Tiles (square and diamond-shaped) provide secure and aesthetically pleasing solutions, even for geometrically complicated building designs. Dormer, chimney head and roof edge cladding counts as part of conventional tile utilization. RHEINZINK-Flat-Lock Tiles are most effective for large roof areas and curtain walls. These represent a further development of the diamond-shaped and square tiles; they are impressive, not only because of their aesthetic appeal, but because of the design benefits. Using different sizes of tiles opens up a multitude of facade design possibilities. The bright rolled version provides **additional potential**, because the natural weathering of the shiny material will vary from tile to tile, which can be quite striking.

- Individual roof covering through variable tile sizes
- High degree of design freedom, even on unconventional roof forms
- Use on flat and steep-sloped roofs
- Cost effective assembly through high level of prefabrication
- Durable and environmentally friendly roofing material

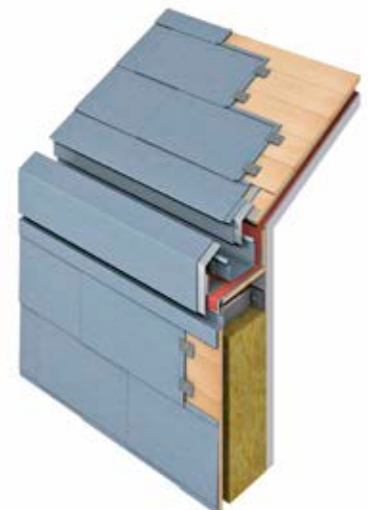


Fig. Right: Central Tower Airport, Edmonton, Canada



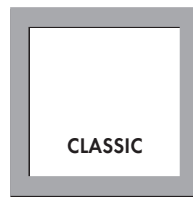
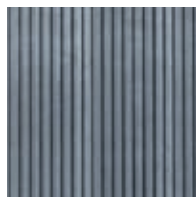


**ONE BRAND –
5 PRODUCT LINES**
**THE PERFECT
SOLUTION
FOR EVERY
REQUIREMENT**

● bright rolled

RHEINZINK-CLASSIC

*ORIGINAL.
EXPRESSIVE.
PATINATES OVER TIME.*



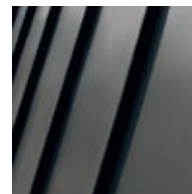
TITANIUM ZINC BRIGHT ROLLED:
PATINATES OVER THE YEARS. NATU-
RAL, VARIABLE SURFACE CHARACTER.

● blue-grey

● graphite-grey

RHEINZINK-prePATINA

*PRE-WEATHERED.
SELF-HEALING.
NATURAL.*

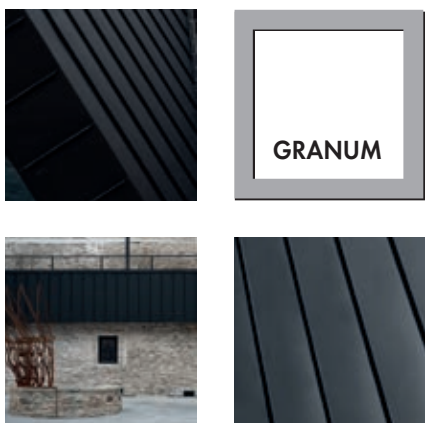
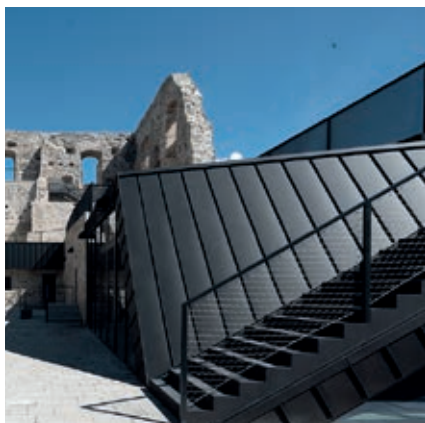


THE ONLY NATURALLY PRE-WEATH-
ERED SURFACE IN THE WORLD.
ZINC TYPICAL PATINA EX WORKS.
100% NATURAL, 100% RECYCLABLE.

- skygrey
- basalte

RHEINZINK-GRANUM

NOBLE.
MATTE FINISH.
MULTIFACETED.

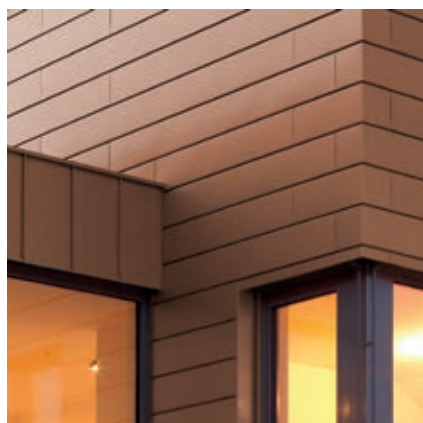


SKYGREY AND BASALTE. PURE, GREY ELEGANCE. URBAN DESIGN. PHOSPHATED SURFACE WITH COUNTLESS DESIGN OPPORTUNITIES.

- gold
- brown
- blue
- red
- green
- black

RHEINZINK-PRISMO

GLAZED.
DYNAMIC.
ADAPTABLE.



AESTHETIC, HARMONIOUS MATCH WITH ITS SURROUNDINGS. SUBTLE COLOUR VARIETY FOR A UNIQUE LOOK. SEMI-TRANSPARENT.

- pure-white
- pearl-gold
- moss-green
- nut-brown
- blue
- tile-red
- black-grey

RHEINZINK-artCOLOR

COLOURFUL.
LIVELY.
CREATIVE.



CREATIVE DESIGN POSSIBILITIES. INDIVIDUAL, EXPRESSIVE COLOUR COMPOSITIONS. COATED COLOUR VARIETY.



RHEINZINK GmbH & Co. KG
Postfach 1452
45705 Datteln
Germany

Tel.: +49 2363 605-0
Fax: +49 2363 605-209

info@rhein-zink.de
www.rhein-zink.de