



CLIPFIX 2.0

Operation, Installation, Maintenance, Spare Parts

Foreword

The present operation manual and installation instructions describe the professional application of the new fixing clip system for RHEINZINK-Standing Seam Profiles. The centrepiece represents RHEINZINK-CLIPFIX. Please read this manual carefully before initial operation of this device and adhere to the safety instructions.

We assume original RHEINZINK-Profiles, RHEINZINK-Fixing Clips made of stainless steel and RHEINZINK-CLIPFIX Single and Collated Screws being used for the proper application of RHEINZINK-CLIPFIX as described in the following illustrations.

All contents are based on building practise experience and correspond to the latest state of knowledge in the field of research and development and to the generally accepted standards of modern engineering. Please note that despite the detailed installation instructions you are always personally responsible for your manner of proceeding. We have to point out, that the RHEINZINK-CLIPFIX is related to the European Guideline 2006/42/EG and in this meaning an "incomplete machine". Therefore a CE-marking is not required. We also reserve the right to make any necessary modification resulting from the technical progress of this system.

Datteln, September 2019

1.	Using the CLIPFIX	Page
1.1	Safety Instructions	1
1.2	Assembly/Initial Operation	1
1.3	Operation/Application	2
1.3.1	Screwing	3
2.	Installation with CLIPFIX	4
2.1	Static	4
2.2	Installation Sliding Clip	5
2.3	Adjusting the pins on the SPECIAL TOOL ATTACHMENT for installation of the fixed Clips	6
2.4	Installation Fixed Clip	7
3.	Maintenance and Care	8
4.	Warranty	8
5.	Troubleshooting/Spare Parts	9 10
	Technical Support	11

OPERATION

1. Operation Manual

1.1 Safety Instructions

General Instructions

RHEINZINK-CLIPFIX should be used only with original RHEINZINK-CLIPFIX screws for industrial and craftsmen work. Only use this tool when you are aware of handling and possible risks.

Refer to the safety regulations as well as to the local regulations for your country.

User protective Information

To avoid accidents and damages, please refer to below listed information!

- Operate the RHEINZINK-CLIPFIX only with the FEIN-Motor.
- Refer always to the safety instructions and operation manual of the company FEIN.
- Never point the tool against another person while the tool is in operation.
- Load the magazin with the collated screws only when the motor is switched off.
- Observe a secure stand before operation, hold the tool with both hands only.
- Do not touch the work piece while operating the tool.
- Be aware that the Sliding Block of the device is under spring force, when taking it apart.

Operation Safety Information

Please refer always to below mentioned information in order to avoid malfunctions.

- Do always use only RHEINZINK-CLIPFIX screws for clip fixing.
- Only use original RHEINZINK-CLIPFIX bits and change them as soon as they are worn out or damaged.
- Switch the FEIN-Motor to "clockwise" rotation to use the tool.
- To remove screws with "counter clockwise" rotation, cannot be advised by operation with magazin.

1.2 Assembly/Initial Operation

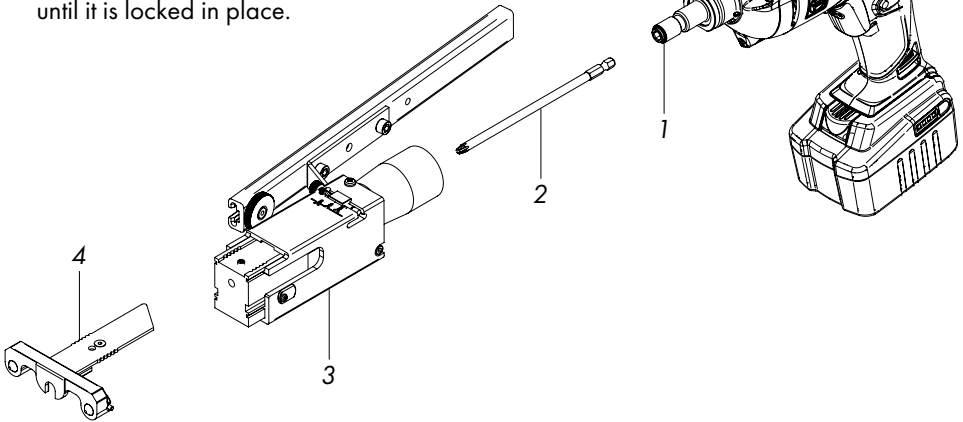
Mounting the CLIPFIX MAGAZIN ATTACHMENT to the FEIN-Screwdriver (see drawing on the right)

- Put the CLIPFIX bit into the bit holder of the FEIN-Screwdriver.
- Place the CLIPFIX MAGAZIN ATTACHMENT on to the FEIN-Screwdriver until it locks in place.
- Adjust the CLIPFIX MAGAZIN ATTACHMENT and the FEIN-Screwdriver in one line.
- The CLIPFIX now is ready for operation.

GB

Assembling the RHEINZINK-CLIPFIX to the FEIN-Screwdriver

- 1 Insert CLIPFIX bit into the FEIN-Screwdriver
- 2 Push CLIPFIX MAGAZIN ATTACHMENT (3) incl. CLIPFIX SPECIAL TOOL ATTACHMENT (4) on FEIN-Screwdriver (1) until it is locked in place.



GB

1.3 Operation/Application

- Put the belt with screws into the Belt Guide and Sliding Block, until the first screw reaches the screwing position.
- Switch the motor to "clockwise" rotation.
- Set the FEIN-Screwdriver in steady operation and **clockwise rotation**.
- Hold the RHEINZINK-CLIPFIX with both hands.
- Press the RHEINZINK-CLIPFIX against the clip and screw with sufficient force. (see pages 6-7)
- The screw will be transported in defined working position and mounted.
- Only remove the tool from the clip when the clutch is released.
- The tightening torque also depends on the force with which the FEIN-Screwdriver is pressed against the screw.
- Checking the depth of engagement and, if necessary, adjusting the CLIPFIX MAGAZIN ATTACHMENT.

OPERATION

1.3.1 Screwing

Correct Insertion Depth

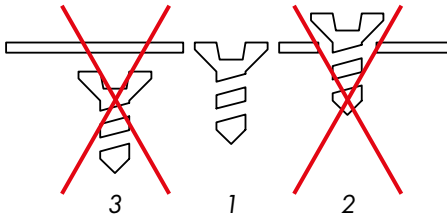
- 1 Screw head totally screwed in flush with the fixing clip hole

Incorrect Screwing

- 2 Protruding screw head
 - 3 Screwing in too deep = strong deformation clip
- If the screw is permanently screwed in too deep, the bit wears off very strongly and quickly.

How to change the Insertion Depth

The insertion depth can be varied by turning the adjusting ring of the CLIPFIX MAGAZIN ATTACHMENT. Please carry out test screwings afterwards.



Attention!

Max. screw size \varnothing 4,2mm x 55 mm on timber boarding and OSB/veneer plywood sheathing.

The machine is not suitable to be used as a usual screw driller!

2. Installation with CLIPFIX

2.1 Static

There are many factors influencing a secure and durable installation of RHEINZINK standing seam roofs. Apart from choosing the most suitable substructure the choice of the single components of the roofing system is most important. All measures and functions of the different parts should fit perfectly.

The RHEINZINK-clips are made of stainless steel, the CLIPFIX MAGAZIN ATTACHMENT and the CLIPFIX-Single and Collated Screws meet highest safety demands.

In wind tunnel studies we tested our RHEINZINK-Standing Seam System simulating a wind load over 50 years in combination with these system elements. At the same time we simulated a 20-year period in which the movement of the sliding clips and their behavior was examined. The result marks the beginning of a new era in the installation of standing seam roofs. The permissible design load of 600 Newton considerably exceeds that load of traditional clips. You will work more economically as processing (screwing instead of nailing) requires less time due to greater distances between the clips.

We offer a standard clip with a suitable height for the installation of RHEINZINK-

Standing Seam Panels either on a (natural) roof boarding or on suitable wood-based panels like plywood or oriented strand boards (OSB). If building physics make the installation of the structured underlay AIR-Z or VAPOZINC inevitable, a higher clip is available. While the standard clips are labeled with ST, the higher clips are marked with H.

You should consult an architect/planner or a structural engineer for calculating the wind loads for your construction project. These data make it easy to determine the number of clips needed per square metre. Please make use of our declaration of conformity for your project for documenting the wind loads and the number of installed fixing clips.

It is available for free download on our homepage www.rheinzink.de / www.rheinzink.com

Information: Assembly of Snow Guard Systems and Clamps

Snow guard clamps, as well as the RHEINZINK-Clamp S5 should be mounted in a distance of at least 25 mm to the next clip to ensure that the sliding function and the expansion behaviour of the RHEINZINK roofing still works.

2.2 Installation Sliding Clip



1. Put the CLIPFIX-Tool/ screwdriver vertically on the sliding clip. Edge of the CLIPFIX-tool and edge of the clip are flush.



2. The left adjustment pin needs to be placed exactly on the centre hole



3. Press the clip against the seam while screwing with sufficient force on right side



4. Remove the tool



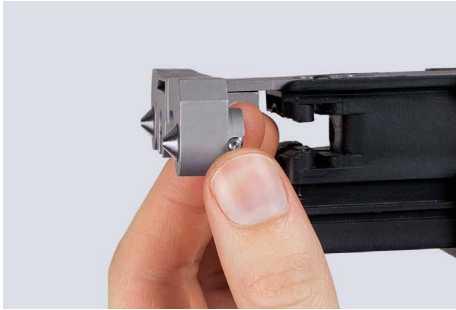
5. Put the right adjustment pin on the centre hole for fixing the left screw



6. Proper mounting with two flush screws

GB

2.3 Adjusting the pins on the SPECIAL TOOL ATTACHMENT for installation of the fixed Clips



1. Pull up split and adjustment pin



2. Turn split pin by 90°



3. Let it click into place

2.4 Installation Fixed Clip



1. Put the CLIPFIX-Tool/ screwdriver vertically on the fixed clip. Edge of the CLIPFIX-tool and edge of the clip are flush.



2. Place the tool exactly on the right-sided halfround edge of the clip



3. Press the clip against the seam while screw in the right screw with sufficient force



4. Remove the tool/screwdriver head



5. Place the tool again on the left-sided halfround edge of the clip



6. Proper mounting with two flush screws

GB

3. Maintenance and Care

- Check the CLIPFIX MAGAZIN SCREW-DRIVER continuously for damages and clean it with compressed air.
- The individual movable parts should be greased/oiled regularly.
- The CLIPFIX-MAGAZIN ATTACHMENT must be stored in a dry place.
- Check the hexagon screws occasionally for tightness.
- Check the bits regularly and replace them if necessary.
- Check the depth setting of the bit regularly. If the screws are permanently screwed in too deep, the bit wears out very strongly and quickly.
- For care instructions of the FEIN-Screwdriver, please refer to the FEIN Operation Manual.

Repair work should only be carried out by professional personnel, using original spare parts.

4. Warranty

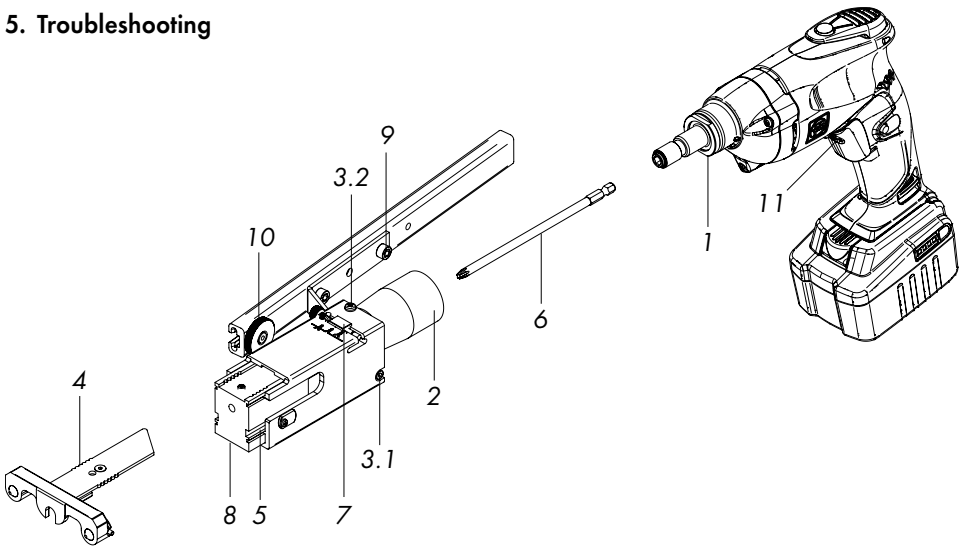
The RHEINZINK-CLIPFIX was designed and manufactured according to the latest technology.

RHEINZINK grants the original buyer for proper function, material and workmanship a warranty according to governmental orders. Normal wear and tear excluded.

The warranty is null and void when improper handling, use of force, repair by third parties and use of non-original parts can be recognized.

A warranty extending further than the items covered by delivery (RHEINZINK-Standing Seam System, RHEINZINK-AIR-Z, RHEINZINK-VAPOZINC, RHEINZINK-CLIPFIX, RHEINZINK-CLIPFIX Screws, RHEINZINK-CLIPFIX-Bits) is excluded as RHEINZINK has no influence over the operation of the equipment in combination with other products. Please observe our General Terms of Sale. The warranty for the FEIN-Motor, FEIN-Screwdriver, is described in the FEIN Operation Manual.

5. Troubleshooting



GB

	Error	Solution
1	The RHEINZINK adapter cannot be pushed onto the autofeed screwdriver or slips off during operation.	Tighten the threaded screw on the machine head carefully using a 27 mm open-end wrench.
2	The RHEINZINK adapter sticks when pushing on/removing from the autofeed screwdriver.	Grease the RHEINZINK adapter occasionally, so that it can be pushed on to the autofeed screwdriver smoothly. Loosen the threaded screw on the machine head slightly, if this is over-tightened causing a crown to form on the screwdriver neck.
3.1	The RHEINZINK-CLIPFIX does not sit flush.	Readjust the CLIPFIX so that it is aligned flush. Loosen the 3.00 mm hexagon screw on the adapter (2).
3.2	The RHEINZINK-CLIPFIX is loose.	Tighten the 2.5 mm hexagon screws (x3) on the adapter (2).

TROUBLESHOOTING/SPARE PARTS

	Error	Solution
4	The screw adjustment head is loose.	Tighten the 3.0 mm hexagon screw on the screw adjustment head.
5	The guide of the MAGAZIN ATTACHMENT sticks.	Grease the guide section of the MAGAZIN ATTACHMENT.
6	Screws are ejected.	Replace the bit.
7		Check the depth setting of the bit. If the screws are permanently screwed in too deep, the bit wears out very strongly and quickly.
8		The „belt carrier“ sticks (see item 8).
10		The belt is not conveyed properly (see item 10)
8	The „belt carrier“ sticks.	Clean the „belt carrier“ regularly using compressed air and oil it occasionally.
9	The belt guide is loose.	Tighten the 5.00 mm hexagon screws (x2) on the belt guide.
10	The belt is not conveyed properly.	Set the dial on the belt guide to „4“. If this is stiff or rusted, please use a lubricant or corrosion remover.
11	Screws can only be tightened using considerable force.	Switch the motor to clockwise rotation!

GB

Spare Parts

	Article No.
Bit for CLIPFIX MAGAZIN SCREWDRIVER, 2 pcs	9898009
CLIPFIX SPECIAL TOOL ATTACHMENT 2.0	9898013
CLIPFIX MAGAZIN ATTACHMENT 2.0	9898014
CLIPFIX MAGAZIN SCREWDRIVER 2.0	9399062

RHEINZINK-CLIPFIX

TECHNICAL SUPPORT

At times, even quality products suffer occasional defects. If you should encounter a problem with your RHEINZINK-CLIPFIX or your FEIN-Screwdriver/battery, our technical support is always at hand.

For technical questions about our CLIPFIX system, please contact your RHEINZINK representative. You can find your colleagues near you at **www.rheinzink.com**

Please always enclose a copy of your original invoice when returning your item.



RHEINZINK Sverige
Tillfällavägen 15
43363 Sävedalen
T: +46 31 7554500
www.rheinzink.se