



# FACADE CLADDING

System Solutions for Facades

SYSTEM OVERVIEW

## Foreword

If the best material curtails creativity, what good is it? If the best idea cannot be realized, what good is it? Materials that foster creativity and lend form to ideas are required for individual solutions, as are consulting services that take technical perfection, structural physics and aesthetics into consideration.

RHEINZINK offers all of the above. Not only does the name stand for unique creative material to clad roofs and facades, but also for exemplary service to implement your ideas – regardless of the size of your project – big or small. We offer solutions that are as unique as your project. A comprehensive range of RHEINZINK facade and roofing products, along with diverse installation techniques, make it easy to find a perfect solution for every design.

RHEINZINK is extremely malleable; it is compatible with every architectural environment and its aesthetic is timeless. Furthermore, requirements for sustainable building using natural material are met without difficulty. RHEINZINK is absolutely maintenance and service free. Its lifetime comprises several generations and that, in and of itself, sets standards; its ecological balance is exemplary.

The examples in this brochure illustrate the design potential of RHEINZINK, along with various options available to you by using this ecological material.

Istanbul, December 2015







TRUMPF Sachsen GmbH, Neukirch, Germany



Terrace-shaped building,  
Oswaldgasse, Vienna, Austria



New Lecture Hall, Victoria University,  
Werribee Campus, Werribee, Australia

## RHEINZINK-Flat-Lock Tile System

Flat-lock tiles are used primarily for large facade areas. This is where the visual effect is the most impressive. By using different sizes of tiles and by changing up the layout of the seam lines, the planner has many options for facade designs. RHEINZINK-Flat-Lock Tiles are available in RHEINZINK-prePATINA blue-grey and graphite-grey preweathered versions, as well as in the bright rolled version. The bright rolled version opens up additional design potential; natural weathering of this material enhances the nuance of colour of each individual tile, creating a very special effect. For quality assurance and optimal material usage efficiency custom production is recommended.

- Individual tile sizes
- High degree of design freedom
- Standard surface qualities  
RHEINZINK-prePATINA  
bright rolled, blue-grey and  
graphite-grey
- Environmentally declared product

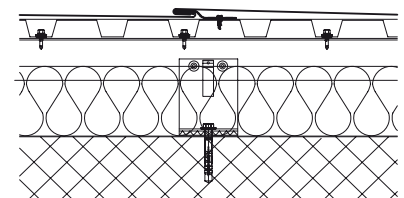


Fig. Cover Page: Operations Building, Montegrano, Italy

Fig. left: Observation Tower, Haenam Gun, Jeon-Nam Province, Korea



Olympic Stadium, Jinan, China



Head Offices of Berlinwasser Holding AG, Berlin, Germany

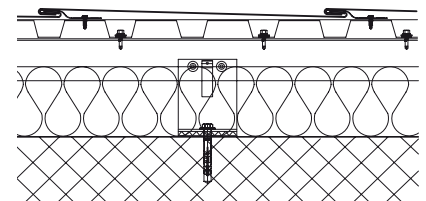
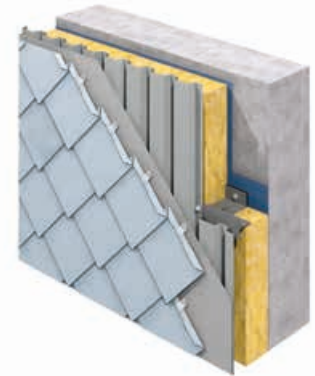


Sir Colin Campbell Building, University of Nottingham, Great Britain

## RHEINZINK-Small Tile System

Square and diamond-shaped tiles make up RHEINZINK's small tile group. Contrary to sheets or shingles, these tiles have forward facing edges on the top surface and backward facing edges on the lower surface to form simple lock joints. The small format of these tiles permits secure and aesthetically pleasing solutions to be realized, particularly for geometrically complicated buildings. Virtually all corners and curves can be accommodated. Dormer, chimney head and roof edges are some of the more conventional applications for small tiles.

- Available in various sizes
- Flexible adaptation to building shapes
- Standard surface qualities  
RHEINZINK-prePATINA  
bright rolled, blue-grey and  
graphite-grey
- Durable and maintenance free







*Zinkhaus, Copenhagen, Denmark*



*Perth Convention & Exhibition Centre, Perth, Australia*

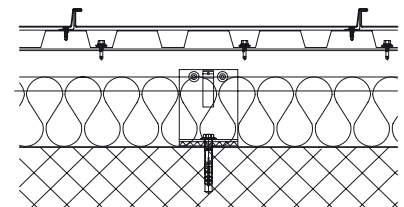


*Villa, Prague, Czech Republic*

### **RHEINZINK-Standing Seam System**

RHEINZINK seam systems join individual panels longitudinally. The angled standing seam is used primarily for facade claddings. Its distinguishing feature is the bold accentuation of its seams (ca. 12 mm width). A variety of panel lengths and widths, allows even the most elaborate shapes to be realized using seam technology. The availability of machines guarantees efficient and consistent forming of panels and closing of seams.

- Suitable for almost every building shape or style
- A variety of panel widths is available
- Standard surface qualities  
RHEINZINK-prePATINA bright rolled, blue-grey and graphite-grey
- Little or no maintenance or service required





*Private Residence, Cantù, Italy*



*Telenor, Fornebu, Norway*

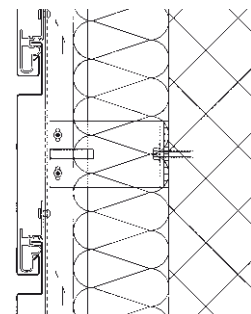


*FERi, Maribor, Slovenia*

## RHEINZINK-Horizontal Panel System

Horizontal panels are similar to reveal panels in appearance. The panels are fabricated with flanges to close their ends; they are attached indirectly via a precisely-defined 20 mm joint, using a special RHEINZINK-Cast Fixing Clip. This ensures that thermal expansion can be accommodated without any difficulty.

- Horizontal facade segmentation
- Panels are available in various widths
- Sliding fastening system
- Standard surface qualities  
RHEINZINK-prePATINA  
blue-grey and graphite-grey
- Panel lengths of up to 6.0 m are available







*Private Residence, Schmerlitz, Germany*



*Apartment Building and Business Center, Lehrte, Germany*

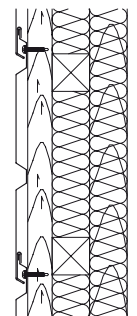


*Multiple Dwelling, Neumünster, Germany*

## RHEINZINK-SP-Line

New and innovative, the SP-Line is a complete system. It consists of a basic panel and prefabricated adjustable flashings; it can be installed both horizontally and vertically. One panel is plugged into the other. "Random designs", uniform seam patterns and "installation using slave profiles" can be realized without difficulty and without waste. Details are solved efficiently and economically. The modern look of the RHEINZINK-SP-Line is impressive; it is a very reasonable, yet high quality alternative to wood, stone and synthetic materials.

- Simple planning and installation
- Complete modular system
- Uniform seam grid
- Made of RHEINZINK-prePATINA blue-grey







*Train Station Passageway, Uster, Switzerland*



*Private Residence, Empel, Netherlands*

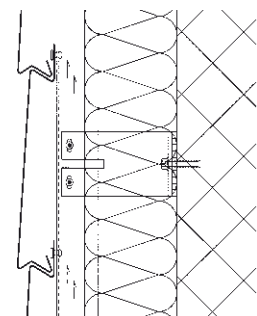


*MG AVU Galerie der modernen Kunst  
Akademie bildender Kunst, Prague,  
Czech Republic*

## RHEINZINK-Shiplap Panel System

Due to its layered characteristics and shadowless joint, the shiplap panel is a particularly unique facade cladding, reminiscent of wooden facades. When exposed to light and shade, interesting shadows and sharp contours appear because of its profile geometry. Precision profile manufacturing (in accordance with detailed planning and pre-defined panel dimensions) guarantees efficient and optimum installation on site.

- Layered sheath look
- A variety of panel widths are available.
- Standard surface qualities  
RHEINZINK-prePATINA  
blue-grey and graphite-grey
- No maintenance or painting





*Columbarium, De Nieuwe Ooster Begraafplaats, Amsterdam, Netherlands*



*Theater am Marienort (previously: Les Misérables), Duisburg, Germany*

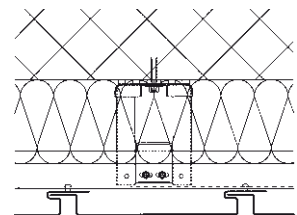


*Yellow Square, Lyon, France*

### **RHEINZINK-Reveal Panel System**

The benefit of the reveal panel is the choice of cover widths (200-333 mm) and variable joint widths of 0-30 mm. With the flexibility of vertical and diagonal installation, the reveal panel offers the architect an exceptional amount of freedom in implementing their design ideas. Configured panels with an extremely wide range of shapes can be realized. Therefore, permanent quality solutions can be implemented very quickly when it comes to renovations or retrofitting insulation.

- **A panel system, with different visual effects**
- **Choice of cover and joint widths**
- **Standard surface qualities**  
**RHEINZINK-prePATINA**  
**blue-grey and graphite-grey**
- **Environmentally declared product**







**RHEINZINK®**

RHEINZINK Türkiye İrtibat Bürosu  
Esentepe mah. Cevizli  
D 100 Güney Yanyol  
Lapis Han No:25/108 Kat 4  
34870 Kartal – İstanbul Turkey

Phone: +90 216 5506292

Fax: +90 216 5506293

info@rheinzink.com.tr

www.rheinzink.com.tr